

CALCIUM MAGNESIUM BOROGLUCONATE INJECTION IP

BCNATE-M

FOR INTRAVENOUS ONLY

Each mL contains

Calcium Borogluconate	IP	
Equivalent to calcium		1.86%w/v
Proportion of Boric acid to Calcium..	IP	2.26 to 1.0
Magnesium hypophosphite	IP	5.0% w/v
Dextrose anhydrous	IP	20.0% w/v
Chlorocresol	IP	0.1% w/v
Water for injection	IP	qs

Indications

Calcium Magnesium Borogluconate is recommended for the treatment of acute and chronic hypocalcaemia in cows, buffaloes, It is extensively used in clinical and subclinical cases of milk fever in cows, buffaloes & other species of domestic animals. It is also recommended for the prevention and treatment of drug induced liver damage.

Dosage

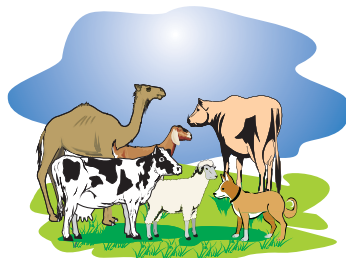
Cattle & Buffaloes	:	200 mL - 300 mL
Adult Sheep & Swine	:	25-50 mL

Route of Administration

I/V

Presentation

450 mL



CORPORATE OFFICE: 6-2-1012, TGV Mansion, 5th Floor, Khairatabad, Hyderabad - 500 004
Telangana, India T: +91 40 6666 7464 / 6677 2726 F: +91 40 6610 4915 / 6677 2725

FACTORY: Plot Nos. 97, 98, 276 & 277, IDA, Pashamylaram, Patancheru, SangaReddy - 502 307 Telangana, India
T: +91 84552 24200 / 84552 24202 F: +91 84552 24201